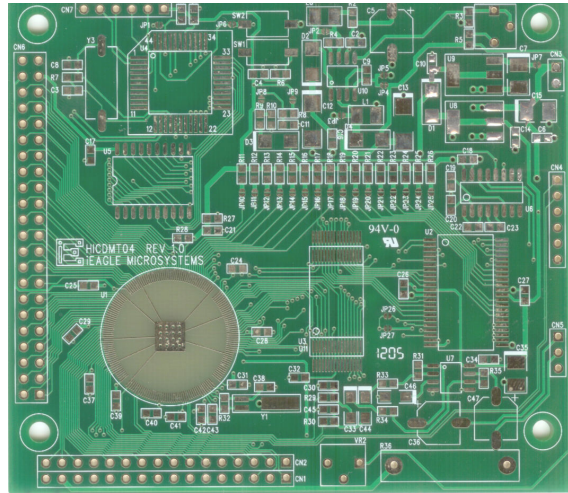
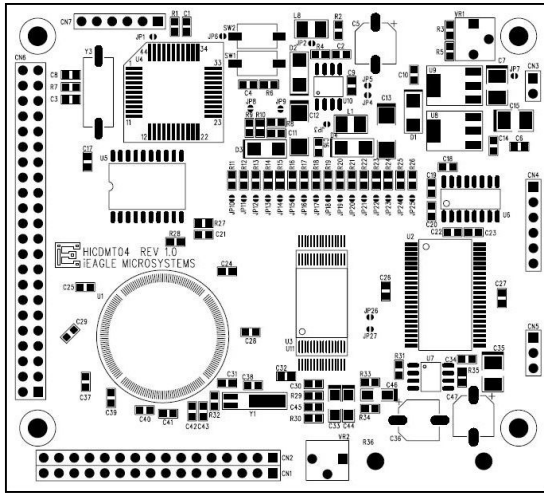




## Graphics Development Board HICDMT04 Layout



Support for the 5.7” 320x240 Color STN LCD Module :

### ◆ Pin Mapping

HICDMT04 Board Connector CN1 & CN2		320x240 Color STN LCD Module Connector K1	
Pin	Name	Pin	Name
CN1 - 4	DRDY	1	M
CN1 - 1	YD	2	YD
CN1 - 2	LP	3	LP
CN1 - 3	XSCL	4	XCK
CN1 - 13	LCDPWR	5	/ DISPOFF
CN1 - 6	VDD_3v3	6	VDD
CN1 - 7	VSS	7	VSS
CN1 - 8	VLCD	8	VEE
CN2 - 6	FD7	9	D7
CN2 - 4	FD6	10	D6
CN2 - 3	FD5	11	D5
CN2 - 2	FD4	12	D4
CN1 - 12	FD3	13	D3
CN1 - 11	FD2	14	D2
CN1 - 10	FD1	15	D1
CN1 - 9	FD0	16	D0



◆ Jumper Settings (All jumpers, except JP10 to JP13, can be over-ridden by software)

Jumper	Position	Descriptions	Comments
JP10	Open	PLL setting	Default (48MHz)
JP12 – JP11	Close-Close	External SRAM	Select 64kx16 SRAM
JP13	Open	Fonts Flash	Default (no Fonts Flash)
JP17- JP14	Open-Open-Open-Open	Bus interface	Default (8-bit host)
JP20 – JP18	Close-Open-Close	12-bit	Select 4R-4G-4B color depth
JP21	Close	8-bit LCD I/F	Select 8-bit LCD I/F
JP25 – JP22	Close-Open-Open-Open	320x240 LCD	Select LCD size

◆ LCD Module Interface Schematic

