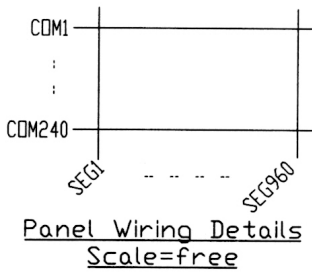
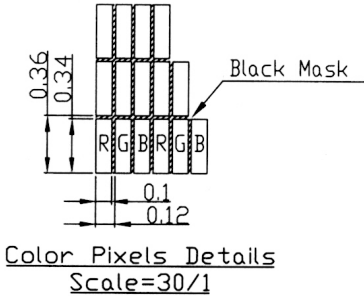
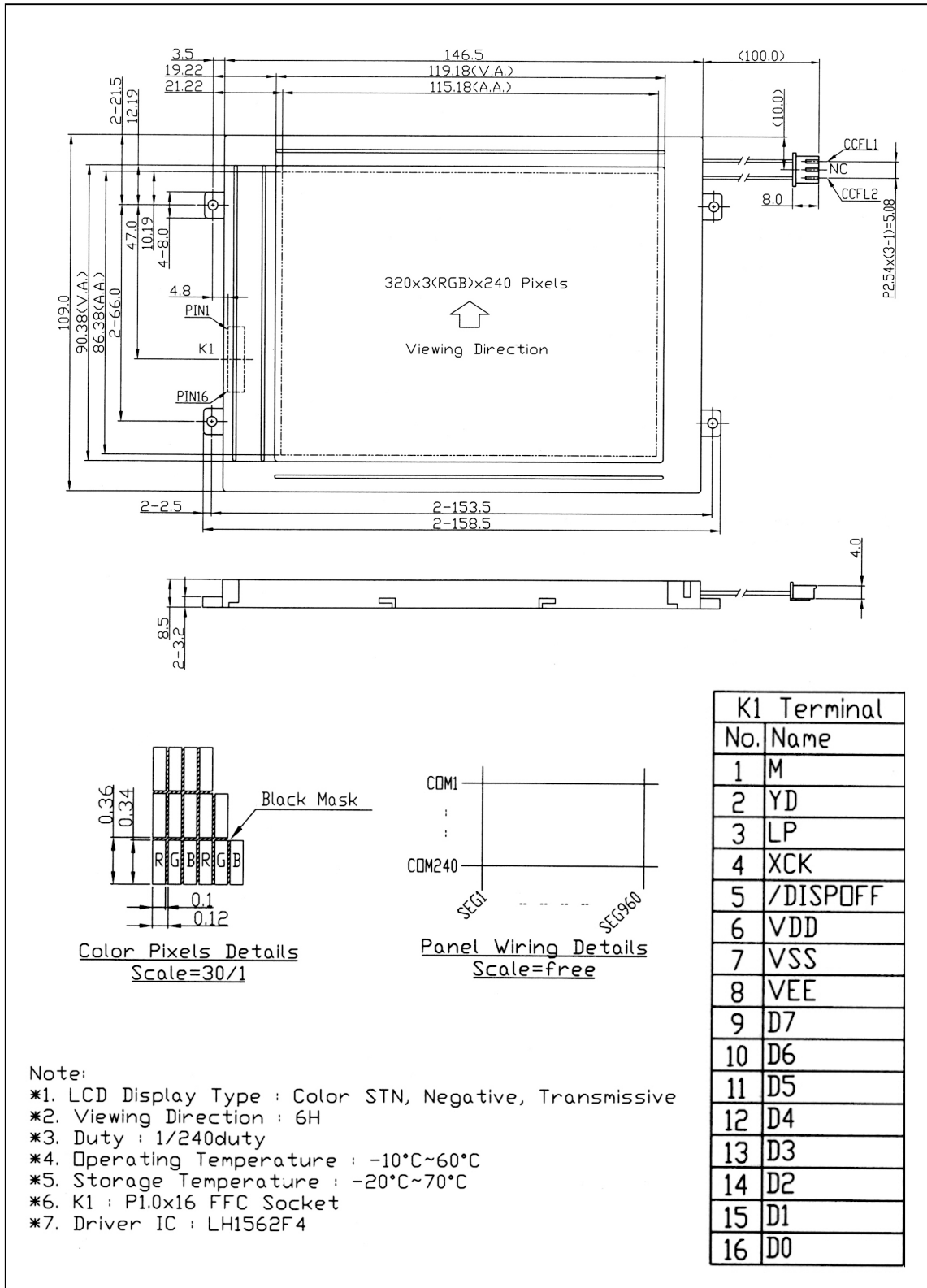




## 5.7" 320x240 Color STN LCD Module Details



K1 Terminal	
No.	Name
1	M
2	YD
3	LP
4	XCK
5	/DISPOFF
6	VDD
7	VSS
8	VEE
9	D7
10	D6
11	D5
12	D4
13	D3
14	D2
15	D1
16	D0

- Note:
- \*1. LCD Display Type : Color STN, Negative, Transmissive
  - \*2. Viewing Direction : 6H
  - \*3. Duty : 1/240duty
  - \*4. Operating Temperature : -10°C~60°C
  - \*5. Storage Temperature : -20°C~70°C
  - \*6. K1 : P1.0x16 FFC Socket
  - \*7. Driver IC : LH1562F4